

CASE STUDY



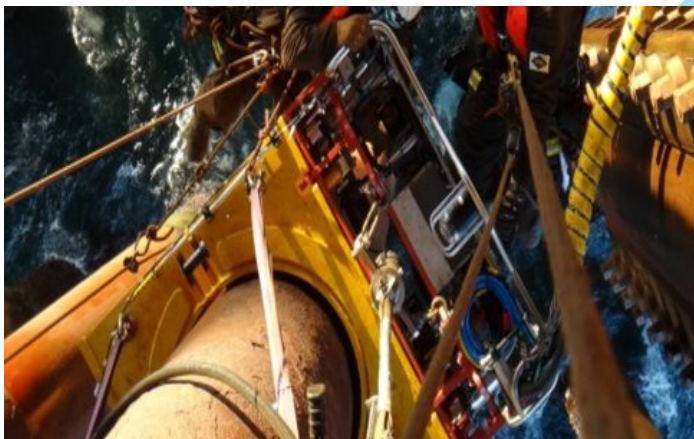
ASSET	FIXED PLATFORM	TEAM	AQUACLAM® SUITE
LOCATION	NORTH SEA	DURATION	2 MONTHS

PROJECT OVERVIEW

Project management and engineering services to design and manufacture bespoke tooling and procedures to enable conductor repairs at EL-12m of 14 conductors

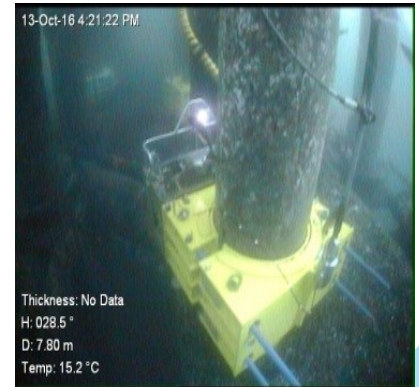
SCOPE OF WORK

- Engineering site survey and data interpretation
- Engineer and manufacture tooling suite to enable cleaning, inspection and repair installation of 14 conductors at subsea location (EL -12m) without ROV or diver intervention
- Analyse and assess inspection data to determine best-suited repair strategy
- Install appropriate repairs on 7 conductors
- Develop detailed procedure for work execution
- Develop project-specific work packs
- Develop lift plans for lowering of AquaCLAM®
- Deliver as-built survey



CLIENT CHALLENGES

- Legacy assets with inconsistent and incomplete data archive for conductors
- Challenging timeline for delivery due to the critical nature of the defects
- ROV survey only provided limited information on defects
- Ageing asset, with considerable amount of defects



AQUATERRA SOLUTIONS

- Carried out in-house engineering assessment of survey data
- Worked in close collaboration with client and asset to develop suitable solution
- Tool designed to be controlled from topside
- Onshore SIT and FAT to qualify tools and methodology
- End-to-end project management, delivering a turnkey integrity solution to the client
- Provided subsea technicians for tooling operations

ADDED VALUE

- ✓ Our solution negated the need for ROV or diver intervention, resulting in a multi-million-pound saving
- ✓ Repair enabled continuous operation of well slots, avoiding unplanned shut-down
- ✓ Repair solution designed to perform for remaining life of asset, with no maintenance

