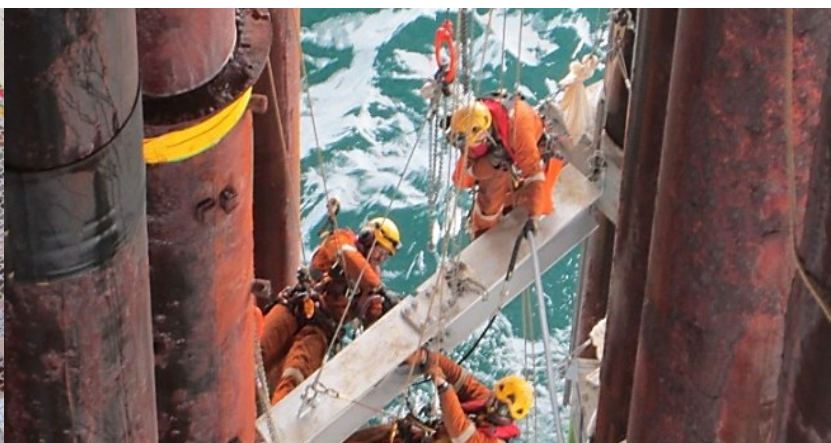


TRACK RECORD



AquaTerra have been working in Caisson and Conductor integrity since 2004 and have developed specialist equipment and procedures to enable cost effective cleaning, inspection, and repair and replacement, all of which can be deployed by rope access specialists, often negating the requirement for high-cost specialist support vessels, diving or ROVs.

CLIENT	ASSET	PROJECT DESCRIPTION	DATE
TAQA	East Brae	SWLP chain restraint	2021
TAQA	North Cormorant	Conductor stabilisation – J-Tube + AquaShim® installation	2021
CNOOC	Scott	Caisson survey, NDT and stabilisation clamp installation	2020
RockRose	East Brae	SWLP Replacement	2020
RockRose	Brae Alpha	Conductor stabilisation with AquaShim® brackets + AquaShim® shims	2020
TAQA	East Brae	SWLP installation	2020
Shell	Brent Alpha	Fire Caisson stabilisation	2019
RockRose	East Brae	Caisson removal & replacement	2019
RockRose	Brae Bravo	A5 PMS Riser removal	2019
RockRose	Brae Alpha	Conductor steel shim installation	2019
RockRose	Brae Alpha	Conductor stabilisation with AquaShim®	2019
Marathon Oil	East Brae	Caisson and SWLP Removal	2018
Marathon Oil	Brae Bravo	Installation of Caisson repair clamp	2018
Marathon Oil	Brae Bravo	Installation of Caisson Sea Water Lift Pump	2017
Marathon Oil	Brae Bravo	Installation of Smart Shims at +9m	2017
BP	Magnus	3D scan of Conductor/Guide, repairs to Smart Shims and Clockspring Install	2017
Marathon Oil	East Brae	Installation of Conductor Stabilisation Chocks / Shims	2017
Fairfield	Dunlin	Conductor removal study / FEED	2017
Fairfield	Dunlin	Onshore conductor removal PoC	2017
Fairfield	Dunlin	Conductor removal decom. campaign	2017 - Present
Marathon Oil	East Brae	Repair & replacement of Caisson	2016
Shell	Brent Alpha	Installation of Conductor shims	2016
Shell	Brent Charlie	Installation of Conductor repair clamp	2016
Shell	Brent Charlie	Removal of slip tubes and inspection	2015-2116
Repsol	Claymore	Installation of smart shims	2015
Shell	Brent Alpha	Installation of Conductor repair clamp including bolt tensioning	2015
Shell	Brent Alpha	Installation of slip tubes	2015
BP	Magnus	Installation of smart shims	2015
Shell	Brent Charlie	Installation of conductor repair clamp	2015
Shell	Shearwater	Installation of conductor clamp & dead weight support	2015