

### CASE STUDY



**ASSET** FIXED PLATFORM  
**LOCATION** NORTH SEA

**TEAM** 4 PERSON  
**DURATION** 1 WEEK

### PROJECT OVERVIEW

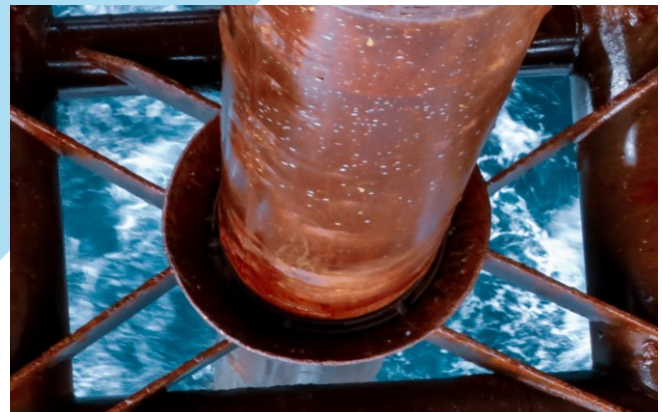
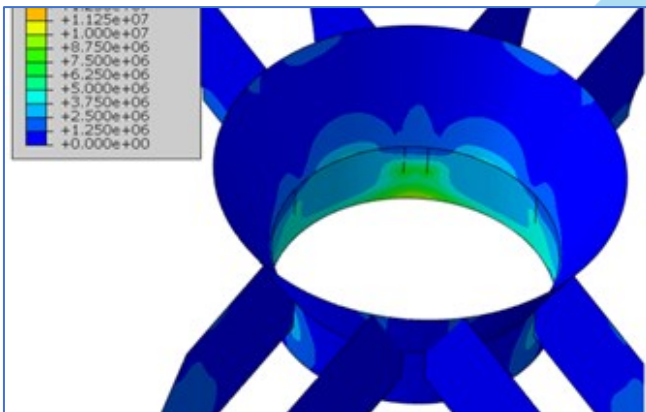
Existing steel conductor shims had failed, resulting in no stabilisation at the +8.0m level, leading to fatigue and fretting damage of the conductor within the guideframe.

Installation of AquaShim® on two 30" conductors at the +8m level to provide long-term, maintenance free stabilisation and damage prevention.

AquaShim® is a fully engineered proprietary product which provides a long-lasting and maintenance-free stabilisation solution for conductors and caissons.

### SCOPE OF WORK

- Carry out detailed structural analysis (FEA) model for AquaShim® to assess its performance on the specific application and to verify load distribution on guide structure
- Remove existing failed steel chocks, inspect and prepare area
- Install AquaShim®



### CLIENT CHALLENGES

- Installation during winter period with temperatures close to freezing
- Limited amount of daylight and potential for unproductive time
- Guideframe located close to LAT
- Solution to allow vertical and horizontal movement, and eventual pulling of the conductors for decommissioning

### AQUATERRA SOLUTIONS

- Single point contact for product design, engineering, manufacture and installation
- Pre-mobilisation onshore trials of materials, equipment and procedures for client confidence
- Comprehensive, project specific training and competence verification programme
- Planning for fall-back work topside when no access to underdeck
- AquaShim® compound can be installed in temperatures as low as 0°C facilitating wintertime installation
- AquaShim® incorporates a liner which facilitates vertical movement and eventual removal of the conductor at decommissioning stage

### ADDED VALUE

- ✓ Ability to safely execute a Splashzone AquaShim repair in the winter season using AquaTerra's in house Rope Access capability
- ✓ Multi discipline team completed several additional fallback scopes during weather downtime adding significant value for client
- ✓ Long-lasting solution maintenance free solution removes requirement and cost for future shim replacement
- ✓ Conductor life extended by protecting for further fretting damage

