

**ASSET** FIXED PLATFORM**TEAM** 25 PERSON**LOCATION** NORTH SEA**DURATION** 5 YEARS

## PROJECT OVERVIEW

Late life leg intervention project, including multiple breaching of the gas tight floor under line –fed breathing apparatus. Inspection, decommissioning and replacement of 14", 10" and 4" process piping and re-directing H<sup>2</sup>S vent lines to Flare within the columns.

## SCOPE OF WORK

- Project management and engineering support
- Development of Workpacks, lift plans and procedures for all scopes
- Materials and equipment procurement
- Management of sub-contracts/sub-contractors
- Preparation of life/project support systems, comprehensive DROPs/make safe programme
- Inspection of all seawater lines and cell fill lines below the Gas Tight Floor
- Conductor survey, clamp installation and repair
- Replacement of electrical and instrumentation systems and piping
- Hydrotightening, flange facing, bolt tensioning of pipe joints
- Fabric maintenance (insulation, application of coatings, composite wrapping)
- Replacement of 2"-12" process piping and tie-in points from column to flare for venting
- Caisson and fire pump replacement
- Installation of cathodic protection

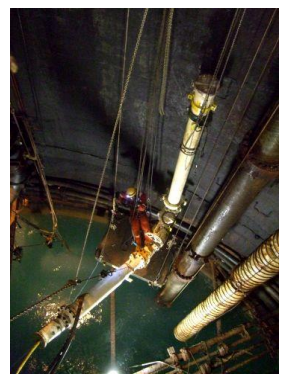
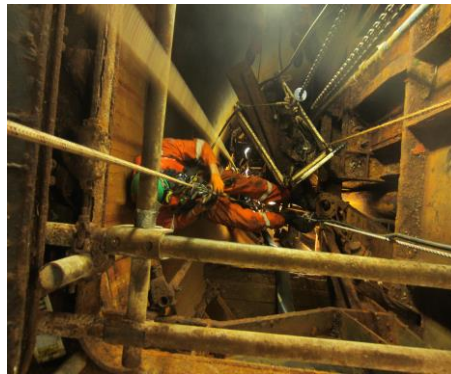
## CLIENT CHALLENGES

- Remote and technically challenging operations beneath the Gas Tight Floor
- Potentially hazardous environment requiring line-fed breathing apparatus
- Physically and mentally demanding work in high temperature, isolated and constricted area
- Hot tapping live plant
- Complex lifting in a heavily congested live plant environment
- Emergency planning and emergency response
- Limited time at worksite due to operational constrictions/priorities
- High number of trade skills and capabilities, limited team size allowed in area

---

## AQUATERRA SOLUTIONS

- Full project management control and responsibility
- Robust personnel evaluation and selection process
- Comprehensive, project specific training and competence verification programme
- Multi-disciplined construction, inspection electrical and rigging using a matrix of project requirements
- Personal development and teambuilding approach
- Pre-mobilisation onshore trials of procedures, processes, critical scopes and emergency response
- High level of communication and interface between client, platform and AquaTerra project personnel



---

## ADDED VALUE

- ✓ Competent, experienced personnel – previous experience of work on sister asset
- ✓ Cultural safety behaviours – 100,000 manhours (40,000 line-fed BA), no LTI's or FA cases
- ✓ Multi-skilled team – reduced downtime, total flexibility, self-reliant
- ✓ Minimal nonproductive time – planned fallback work meant maximum productivity
- ✓ Quality assured – backed by multiple certifications and accreditations

## YOUR INTEGRATED SERVICES PARTNER

AquaTerra Group AquaTerra House, Tofthills Avenue,  
Midmill Business Park, Kintore, Aberdeen, UK AB51 0QP  
T +44 (0) 1224 392626 E [construction@aquaterra.co.uk](mailto:construction@aquaterra.co.uk)

---